



# THE RAG

AUTUMN / WINTER 2023

## A NOTE FROM THE PRES.

Late this summer, our community experienced a visible and frustrating episode of vandalism, when unknown persons stole the U.S. flags and severely damaged the flowerboxes that adorn the Divide between North and South Turtle Lakes. Local law enforcement have investigated, but no suspects have been identified. As TLCA volunteers have labored through the years to buy, plant and water the flowers and maintain the beauty of the Divide, repairing the damage and replacing the flags was a priority item at the TLCA board meeting on Labor Day weekend.

So imagine our surprise when the agenda item came up, and before we could begin discussing it, were told, "it's all handled." Bernie and Penny Klotz, longtime Rock Lakers and TLCA members, had come forward on their own to replace all the flags and flowerboxes, and foot the bill.

Talking with the Klotzs, it's clear they much prefer to fly under the radar, but agreed to let me make this public acknowledgement, which I'm doing for three reasons. First, to thank them for their generosity and concern. Second, because Bernie and Penny are just the latest example of all the wonderful people in our organization; people who continue to step up, volunteer and contribute, working on the Divide, monitoring for invasive species, helping with picnics, serving on the board and wrestling buoys — it's because of all of you that the TLCA works. Thank you. And finally, it's a reminder that kindness, generosity and community spirit are still in style, at least up here on the Turtle chain. Let's keep it going.

## IN THIS ISSUE:

### **ANOTHER DAM REMINDER**

Page 2

### **WAKEBOAT ORDINANCE UPDATE**

Page 2

### **EURASIAN MILFOIL SIGHTING**

Page 3

### **REMEMBERING GERRY KUTZ: AVID FISHERMAN AND DEVOTED FRIEND OF THE TLCA**

Page 4

### **BATS: MONITORING OUR FLYING FRIENDS AND ALLIES**

Page 6

### **MUSKY TOURNEY & FLOWERS**

Page 10

### **FUN DAY RECAP**

Page 11

### **LOCAL LIBRARY NEWS**

Page 12

## NEWS FROM THE TOWN

### ANOTHER DAM REMINDER . . .

Every Autumn, the Town of Winchester adjusts the lake levels on our chain, drawing the water down by “pulling the boards” on the South Turtle Lake dam. This is always slated to happen on the **first of November, though it can be moved up to October 31** if factors like weather conditions dictate. This is a town operation, not a TLCA operation, but we’re here to remind everyone so that boats and docks can be removed before the water level drops. Our strong suggestion: **DON’T WAIT** till the last week of October; allow yourself and any dock or boat-removal service you’re using some wiggle room to take out what you have to take out.



*“I have mixed emotions about getting caught and thrown back.”*

### WAKEBOAT ORDINANCE UPDATE

In the last few years, the Town of Winchester (along with most of northern Wisconsin) has heard concerns from residents about the impact of wakeboats on Wisconsin lakes. In brief, their operation can churn up lake bottoms, the large waves they generate can swamp small watercraft and shorelines, and their ballast tanks can transfer water from one lake to another, with the possibility that invasive species are along for the ride. While addressing these concerns isn’t a TLCA responsibility — we have no governing authority; it’s a matter for the Town of Winchester — we’re happy to pass along the latest updates from the Town.

Through the Town’s **Lakes Committee**, this matter has been researched, studied and discussed, and public comment reflecting all points of view has been gathered. Based on this input, the Lakes Committee has sent recommendations on regulating how and where wake boats can be safely operated to Winchester’s **Planning Commission**. The Commission will use the Lakes Committee’s input to craft a formal ordinance, which will then go to the **Town Supervisors** for consideration. The ball is currently in the Planning Commission’s court, but it’s estimated that these steps will be completed this winter and spring. For more updates and info, visit the Town’s website — they provide minutes from all meetings and notices for all upcoming meetings, including ZOOM links if you’d like to attend but are out of town. <https://www.winchesterwi.com>


# INVASIVE SPECIES NEWS

## EURASIAN MILFOIL SIGHTING!

As part of our monitoring for invasive species, the TLCA coordinates the efforts of volunteers who monitor our chain for any signs of trouble. Late this summer, volunteers who had stopped by the South Turtle Lake boat landing discovered a boat trailer with Eurasian milfoil hanging from its frame. The boat and owner weren't there; they had apparently launched and were somewhere out on the chain. So we're not sure where the milfoil came from, but the important take-away is that our chain has been exposed to it.

Because the best way to combat Eurasian milfoil is through early detection and aggressive defense, the TLCA plans to ramp up proactive action with focused monitoring next spring and summer. We're encouraging all members to get involved, by keeping a watchful eye for any signs of Eurasian milfoil while you're out boating, kayaking, fishing, relaxing on your dock, etc. Be sure to check your boat trailer, especially if you're coming out of another lake. And if you find any evidence of the invasive plant, report it to TLCA board member and AIS specialist Gary Engstrom. To help you identify it, and to tell it apart from native Northern milfoil, here are two graphics that show the specific differences. Thanks for your help!

**INVASIVE SPECIES**

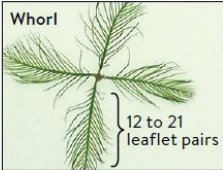


### Eurasian Watermilfoil (*Myriophyllum spicatum*)

**Characteristics:**

- Submerged, limp aquatic plant
- Whorls (circles) of four delicate feather-like leaves around stem
- Usually 12 to 21 leaflet pairs per leaf


Whorl



To report invasive species:  
Wrap plant in wet paper towel, place in sealed plastic bag, chill or refrigerate, and contact the Minnesota DNR at [www.mndnr.gov/ais](http://www.mndnr.gov/ais) or 651-259-5100.

**NATIVE SPECIES**

**Beneficial to the environment**

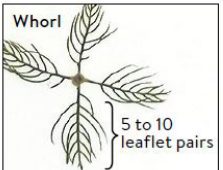


### Northern Watermilfoil (*Myriophyllum sibiricum*)


**Northern Watermilfoil Characteristics:**

- Submerged, stiff aquatic plant
- Whorls (circles) of four rigid feather-like leaves around stem
- Usually 5 to 10 leaflet pairs per leaf

Whorl



**Prevent the spread of invasives:**



- ✓ Clean aquatic plants and invasive species from watercraft.
- ✓ Drain lake/river water from all equipment. Keep drain plugs out during transport.
- ✓ Dispose of unwanted bait in the trash.

## IN MEMORIAM

### GERALD "JERRY" KUTZ, *THE WARRIOR MAN.*

by Stephanie Kutz

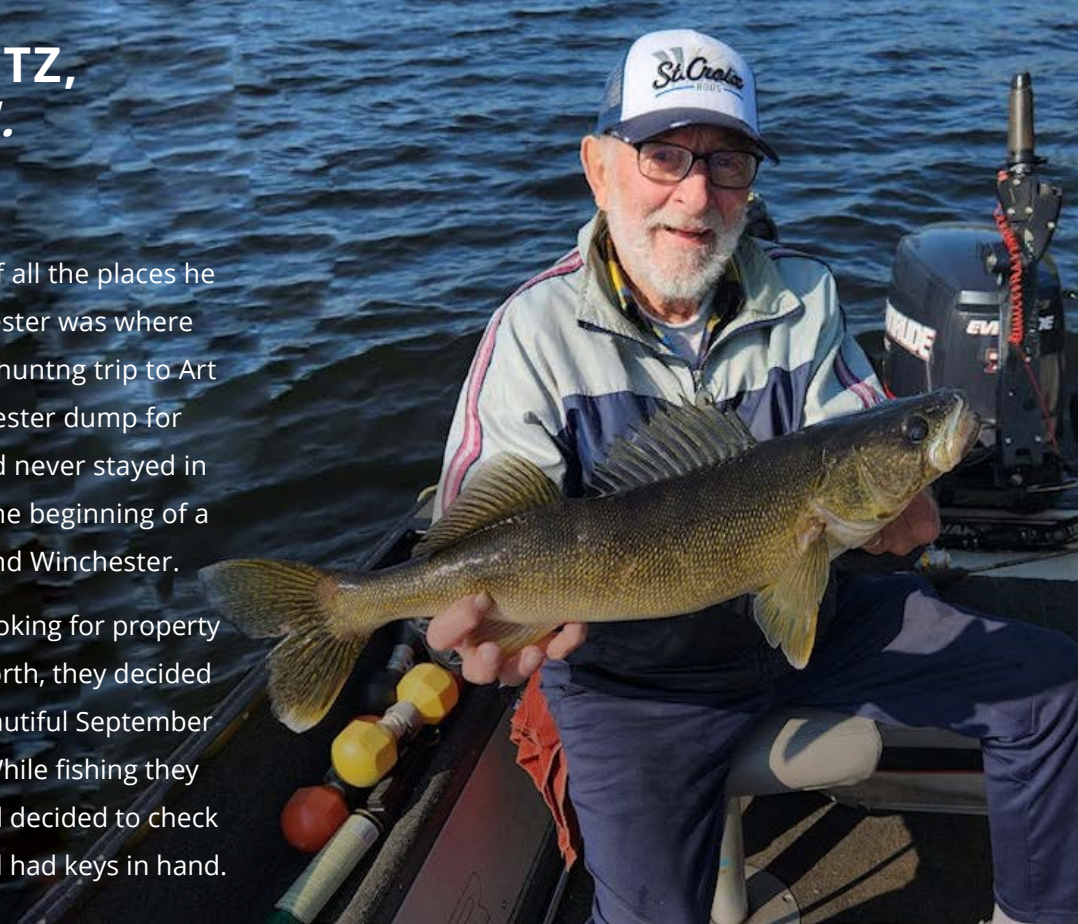
South Turtle Lake was home to Jerry. Of all the places he had lived and worked in his life, Winchester was where his heart was. In 1969 Jerry won a bow hunting trip to Art LaHa's. While he frequented the Winchester dump for bear-watching with his children, he had never stayed in Winchester. The bow hunting trip was the beginning of a lifetime love of the Turtle Rock Chain and Winchester.

In 1988, he and his wife Carolyn were looking for property in the Northwoods. On a weekend up North, they decided to fish on South Turtle Lake. It was a beautiful September day and they caught over 30 walleyes. While fishing they came across a mobile home for sale and decided to check it out. Three weeks later they closed and had keys in hand.

They instantly made lifelong friends and immersed themselves in the community. Jerry was actively involved in the TLCA and Presque-Isle Winchester Sno bunnies. 48 weekends each year were spent up north fishing, hunting, snowmobiling, ice fishing and golfing. Evenings (and some days) spent at Tall Timbers, JD's, and The Bear. Friends and family were welcome guests any time and treated to pontoon boat rides, fishing, and campfires. In 1993 the mobile home was moved and they built their retirement home, becoming permanent residents of Winchester.

Born on March 1, 1939 in West Allis Wisconsin, Gerald Alan was the first child of Alvin and Edna (Henke) Kutz, A year later his sister Marilyn (Grant) Schaal was born. Ten years later, his baby brother Roger. Jerry grew up in West Allis, but summers were spent with his grandparents on Tichigan Lake, with hours of swimming and fishing. Jerry's dad often took him pan fishing with a cane pole, but his Uncle Kurt gave him his first spinning rod. Back home in West Allis, Greenfield park and Lake Michigan in Bay View were favorite fishing spots. Jerry was hooked. His passion for fishing lasted until the day he died. He was in his own boat in Canada with his son Doug. They were "hammering them." For three days Jerry fished hard and on May 22, 2023 he threw out one last cast, set his rod down and passed away doing what he loved. It was the perfect death.

... Article continues next page



## IN MEMORIAM

Jerry grew up in West Allis, Wisconsin. As a boy, he had many interests. His love and knowledge of the outdoors was seeded in his experience as a boy scout, where he achieved the honor of becoming an Eagle Scout. His love of music was encouraged by his mother through piano and accordion lessons. He sang in the church choir and was part of his award-winning high school choir. Some of you may have enjoyed an occasional karaoke performance of "Love Sick Blues." His frequent attendance at the State Fair was made possible by a weak spot in the fence that provided free admission. Jerry spent hours in the horse barn and convinced owners and trainers to allow him to clean stalls, groom horses and any other chore. He watched everything and paid attention. One of the owners took notice of Jerry's skill with horses and at the age of fifteen convinced his mother to let him travel the horse circuit for the summer. Eventually Jerry became a trainer of American Saddle Bred 3 gait and 5 gait show horses. He loved the horse business as much as hunting and fishing, but it wasn't conducive to having a family. He left the business and moved back to Wisconsin with his wife, Claire and their two daughters, Stephanie and Jeri. His "boys", Doug and Darin were born a few years later.

The family settled in Waterford, Wisconsin. Jerry started working as an auto mechanic in his friend's service station. Again, he paid attention and developed the skills for his lifelong trade. Jerry spent 30 years as a mechanic. He retired in 1994 from Wisconsin Electric where he worked as hydraulics specialist.

Jerry married Carolyn (Cooley) in 1988. They celebrated 35 years of marriage on March 19, 2023. Some of you may remember afternoons spent touring the chain on "The Orange Roughy" and grilling on the back of the pontoon. There is still a grill full of hot dogs on the bottom of Rock Lake. A few of you were part of the annual "island" Party on South Turtle. Some of the TLCA members were present when Jerry and Lee Leeder won the grand prize at the boat parade as "Grumpy Ole Men." They were even featured in the Lakeland Times!

Jerry spent time almost every day on the chain. Over the course of 35 years, he discovered every weed bed, rock bar, and wooded shoreline. He probably caught every walleye and released it, twice. You may simply know him as the guy in *The Warrior* with the white beard. He always had a friendly greeting and would take time to chat with other anglers. If you asked how the fishing was he would share a report. "No good" meant he had caught 3 or 4 walleyes, "fair" meant a half dozen, "Not bad" meant a dozen and a "good outing" meant anywhere from 15 to 20+ walleyes. Many of his favorite fishing holes were the cribs that he helped build and sink 30 years ago (that is a clue if you were wondering where his secret spots were.)

Jerry's love of the Turtle Rock Chain was the inspiration for the memorial contributions. On behalf of his wife Carolyn, and his 4 children, Stephanie, Jeri, Darin and Doug we want to thank everyone for the contributions, kind words, phone calls, cards and hugs. Our father's spirit lives on out on the water and he is still hassling the walleyes. There's one!

***President's note: Jerry's wish was that memorial donations be given to the TLCA, to use as we deem fit. The board is discussing the best way to honor him and his request, and we'll keep the Kutz family and TLCA membership informed. Our condolences to the Kutz family, and our thanks and appreciation for your support and generosity.***

# MONITORING AND MEASURING

## CHECKING UP ON OUR LOCAL BAT POPULATION

by Gary and Barb Engstrom

*From Halloween decorations to Vampire movies, bats tend to get a bad rap. It's only in recent years that benefits of bats have become more widely known — they play an essential role in pest control (yes, that includes mosquitos), pollinating plants and dispersing seeds. According to the U.S. Fish and Wildlife Service, bats save more than \$1 billion per year in crop damage and pesticide costs. Gary and Barb Engstrom are here with an update on local bat-monitoring efforts.*

This article is an update on the annual Bat Population Monitoring on Rock Lake. We became involved in the State-wide program five years ago. The program is managed locally by the North Lakeland Discovery Center.

## BACKGROUND ON WISCONSIN BATS

Wisconsin has eight bat species that fall into two major categories, 1) Cave bats which hibernate and 2) Tree bats which migrate. Wisconsin's **hibernating cave bats** include Little Brown, Big Brown, Northern Long-Eared and Eastern Pipistrelle. Of these, two have shown up on our surveys:



### LITTLE BROWN BAT

The Little Brown is a medium sized bat that prefers to forage near water and along field edges. They can live for up to 10-15 years. They eat many species of wasps, moths, leafhoppers and flies, including MOSQUITOS.



### BIG BROWN BAT

The Big Brown has similar coloring to the Little Brown, but is about twice the size and has a wide black muzzle. They live for 15 or more years. The Big Brown is known for eating large amounts of insect species including moths, wasps, true bugs and beetles.

... Article continues next page

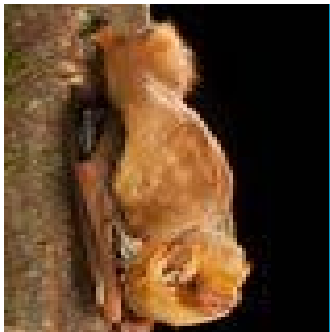
# MONITORING AND MEASURING

Wisconsin's **migrating tree bats** consist of Silver-Haired, Eastern Red, Hoary and Evening Bat. Of these, three have shown up on our surveys:



## SILVER-HAIRED BAT

This is a medium-sized species with dark fur with silver tips giving it its name. It prefers to roost under bark and in tree hollows and forages in wooded areas. Silver-Haired bats eat moths, flies and beetles.



## EASTERN RED BAT

This is a large, common species in Wisconsin. It has a brick-red to yellowish-red fur, often with white tips, giving the bat a frosted appearance. It's easily identifiable since no other bat in Wisconsin possesses red fur. It roosts and forages in deciduous forest and can be easily overlooked because it can appear to be a dead leaf. It primarily eats moths, but also true bugs and beetles.



## HOARY BAT

The Hoary bat has brown, tan or yellowish fur, often tipped with white and is the largest Wisconsin bat. The Hoary bat roosts and forages in deciduous and evergreen forests. It prefers moths, and their echo-location calls can sometimes be heard by humans since they are lower frequency than other bats.

## THREATS TO BAT POPULATIONS

**White-Nose Syndrome (WNS)** is a bat fungal infection that was first detected in a single cave in 2006 in New York State. The disease was named "White-Nose Syndrome" due to the white, fuzzy growth that occurs on the nose, ears and wings of some affected bats. It has spread rapidly across the U.S. and Canada, resulting in the death of an estimated six million bats in the first six years alone. WNS has been identified in Wisconsin and the UP of Michigan. The hibernating cave bats are the species most susceptible to the WNS.

... Article continues next page

# MONITORING AND MEASURING

## HOW WE MONITOR OUR BAT POPULATION

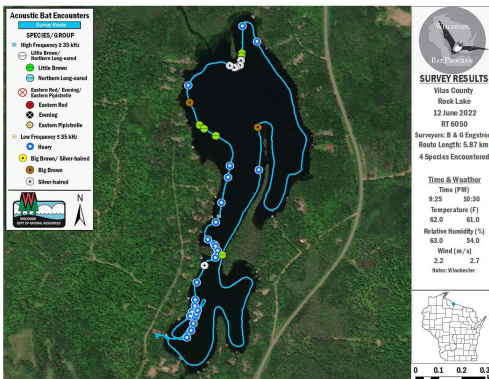
We perform the monitoring three times each summer, usually in June, July and August/September.

We employ an acoustic monitoring system capable of detecting and recording the bats' high frequency calls while they fly through an area. The emission of the high frequency calls and echo detection by the bat is called echolocation and allows the bat to fly in complete darkness while capturing prey and avoiding objects such as tree branches.

A hand-held system records these calls while stamping them with the date and time of each encounter. Combined with a global positioning system (GPS), the detector automatically records the position (latitude & longitude) of each bat passing the surveyor along with the route travelled during the survey. Another benefit of the technique is that individual bat species can be identified, since they possess a unique acoustic signal signature.

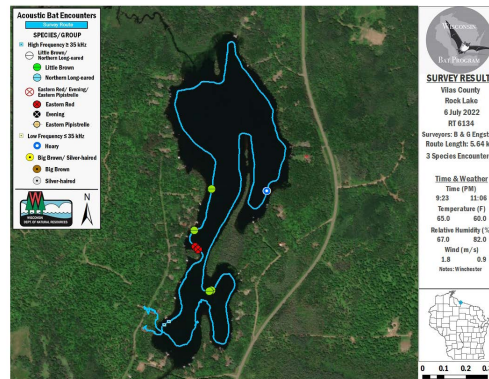
## MONITORING RESULTS FOR ROCK LAKE IN 2022

These maps show results for June, July and August 2022. The blue line shows the GPS trace for our monitoring route around the lake; the circles are individual bat encounters. The different circle colors correspond to different bat species.



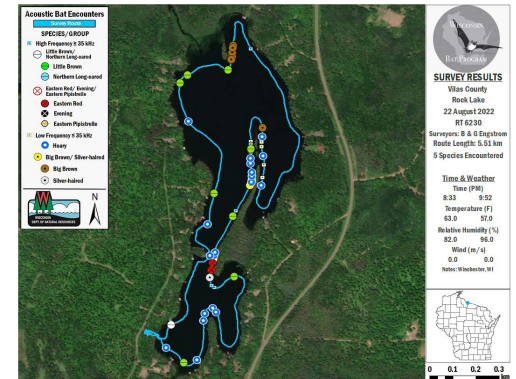
### 6.12.22 SURVEY

The Survey shows (40) bat encounters representing four different confirmed species including: 1. Silver-Haired (6); 2) Hoary (25); 3) Little Brown (7) and 4) Big Brown (2).



### 7.06.22 SURVEY

This Survey shows seven (7) bat encounters representing three (3) different confirmed species which included the Hoary (1), Little Brown (4) and this time the Eastern Red (2).



### 8.22.22 SURVEY

The survey shows forty-one (41) bat encounters representing (5) different confirmed species including the Silver-Haired (1), Hoary (21), Little Brown (8), Eastern Red (3) and Big Brown (6).

... Article continues next page





# MONITORING AND MEASURING

## BAT SURVEY SUM TOTALS, SO FAR:

This table shows the number of bats encountered by species for the years 2018, 2019, 2021 and 2022. (The Covid year of 2020 was omitted since we had only one survey reported.) There appears to be a notable increase in the appearance of the Hoary, while there may be a slight decline in the Little Brown and Big Brown (which are cave bats, the most susceptible to the WNS). It will be important to see how populations fare in 2023 and beyond. There are a number of variables that impact these counts from month to month and year to year, so much more data is required.

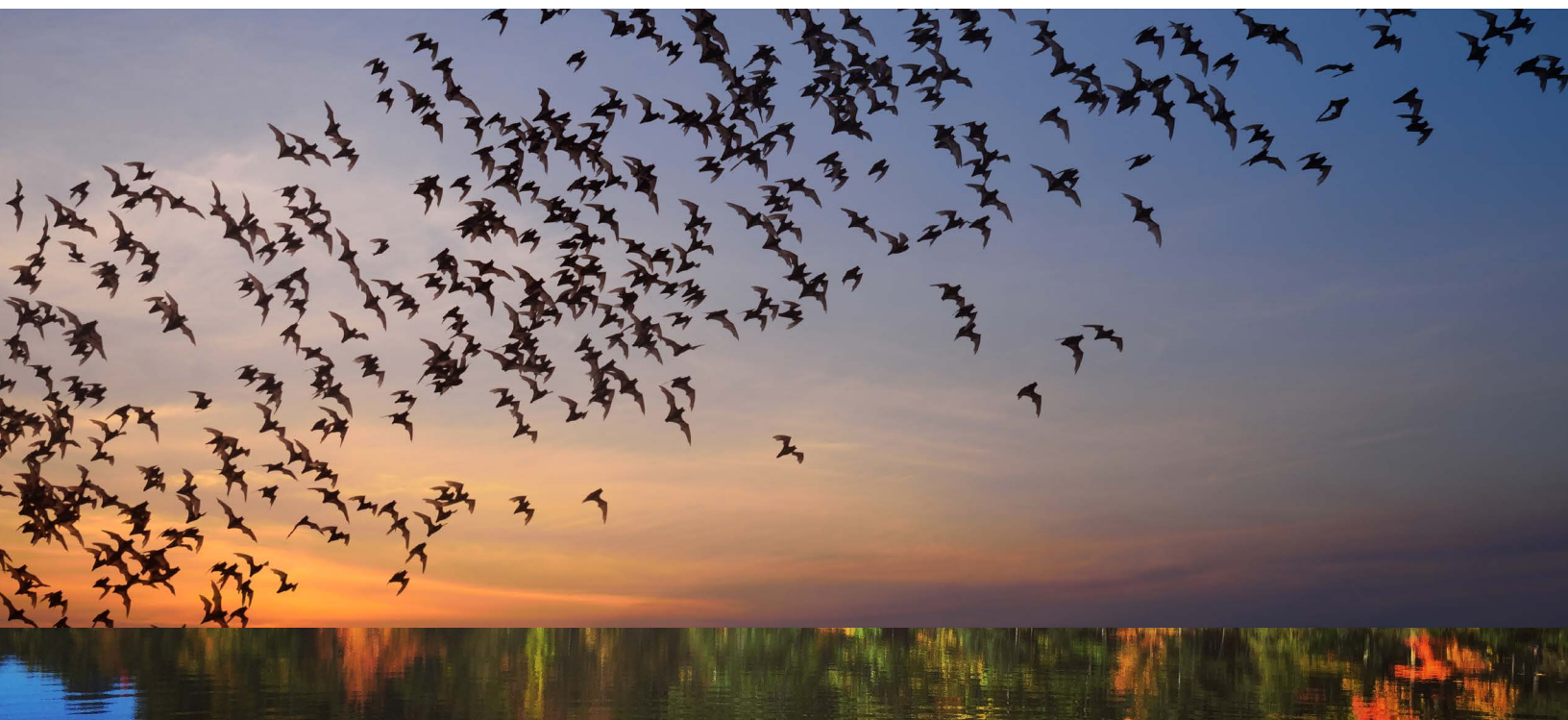
## BAT ENCOUNTERS BY SPECIES

	2018	2019	2021	2022	Total
<b>L.Brown</b>	25	33	12	19	<b>89</b>
<b>B.Brown</b>	18	21	11	8	<b>58</b>
<b>Silver</b>	7	4	4	7	<b>22</b>
<b>Hoary</b>	23	2	43	47	<b>115</b>
<b>E. Red</b>	1	6	0	5	<b>12</b>
<b>Total</b>	<b>74</b>	<b>66</b>	<b>70</b>	<b>86</b>	<b>296</b>



## WANT TO GO BATTY WITH US? HERE'S HOW TO SIGN ON:

We will continue to monitor the bat population on Rock Lake and add our data to the WDNR database as part of the State's Citizen Science Program. If you're interested in participating in Bat Surveys, contact Licia Johnson at the North Lakeland Discovery Center: [licia@discoverycenter.net](mailto:licia@discoverycenter.net)



# TLCA FISHING, FLOWERS ...

## CONGRATS TO OUR MUSKY TOURNEY WINNER! by Tom Rued

After a hard-fought (or should that be hard-fished?) weekend on the water in June, a young man and dedicated angler named Sam Schultz caught the 37" winner, fishing with his father. He's a diehard musky addict! Sam is the son of South Turtle Lake residents Ron and Linda Schultz, so it's obvious that fishing runs in the family. Congratulations to Sam and thanks to everyone that hit the water for this great event!



## THANKS FOR A SUMMER OF BEAUTY, TLCA VOLUNTEERS!

by Susan Esslinger

The flowers on the Divide were particularly beautiful this year. Thank you Laura Giffin, for always making this happen, and a big thank you to the numerous volunteers who helped with the planting, fertilizing and watering of those flowers through the season, making our Turtle Chain views even more spectacular. It was truly a delightful sight from boat, car, bike, or walking shoes. While we were saddened by the loss of our flags and two flowerboxes to vandals, we're thankful to the Klotz family for helping us replace them, and we look forward to coming back bigger and more beautiful than ever in 2024!

# ... FUN AND FORE!

## FUN DAY LIVES UP TO ITS NAME!

To alleviate any suspense, yes, TLCA FUN DAY 2023 was FUN. Threatening weather did not materialize, but plenty of TLCA members did, for kayaking the placid waters of South Turtle Lake, golfing at Lake Gogebic, and gathering later in the day for a feast of grilled pork tenderloin and all the fixins,' followed by a raffle with some truly impressive prizes donated by members and local businesses. Thanks to everyone who contributed — the prize-seekers, our grilling guys and raffle wranglers and a special thanks to Marjean Schuelke for doing her usual bang-up job as event mastermind. See you in 2024!



## TLCA FUN DAY GOLF TOURNEY A GREAT SUCCESS! by Darryl Osikowicz

As part of the 2023 TLCA FUN DAY, 60 golfers enjoyed a beautiful day at the annual TLCA Golf Tournament. The Lake Gogebic course was in fantastic shape. Course Pro Gary and his staff provided us with another awesome event! The competition was fierce as usual, but one team took a resounding lead and never looked back. With a two-stroke lead, **Team Klotz** took home the 2023 TLCA Championship! Congratulations to all of the winners, and mark your calendar for next year's event: **Saturday, July 27, 2024!** Special thanks to Gary Engstrom, Jim Hochstetter, Leo Crowley, Rick & Joyce Clem, Jan Osikowicz, The Gibson Family, plus Brian and Nate Fons for their help at the event!



**Winning Team:** Jack Eldred, Michael Cibelli, Bernie Klotz, Dylan Cibelli • **Wildcat Winners:** Marjean Schuelke, Pam Stemper, Sue Stemper, Maya Discianno  
**Individual Awards:** Marjean Schuelke, Maya Discianno, Patty Potts, Joe Stemper, Art Schuldt and John Knapp

# BOOKS ARE JUST THE BEGINNING

## GREETINGS FROM YOUR WINCHESTER PUBLIC LIBRARY!

by Betty Forster

We had a very busy summer this year — lots of interesting programs for children and adults, featuring everything from animals and rocks to lakes and cooking demonstrations. Mah Jongg, Book Club and various meetings happened here, along with a consultation by an ADRC Elder Specialist and questions answered by our County Representative. There were insightful classes, history walks around the townsite, a successful blood drive and a very tasty pairing of Beers and Cheeses. We hope you attended and found the programs interesting, informative and fun.

This **Fall through Spring** we are open **Thursday, Friday and Saturday**.

Keep in mind the **many services** we offer to you, including:

**Books** — Found here or through our Lending service, with 30 libraries in our system!

**Puzzles** — Children's to 1000-piece puzzles

**Adaptive mobility items for loan** — Walkers, raised toilet seat, crutches, canes, knee scooter, bathtub raised seat, wheelchair

**Games for loan** — Too numerous to mention, come take a look!

**Odds n' Ends for Loan** — Foldable small dolly, softball, shredder, Brother sewing machine, ironing board & iron, computer battery back-up, home electricity usage monitor

**For sale** — Beautiful headbands, hats – adult and child sizes, mittens for adults and children, sweaters for children, fingerless driving gloves, wool socks, a lap quilt, pot holders – all hand made by Lois McManus; library T-shirts – short or long sleeve

**Lakeland Times** and magazines available

Themed **monthly crafts for kids**

**Computer, phone, printer questions answered** by Blaze on Thursday free of charge

**Mah Jongg** continues play every Thursday, with new players always welcome

**Zumba** on Mondays, Tuesday and Thursday beginning at 8:15

**Meeting room** for your group

**Cookies and coffee** available every day we are open!

Do stop in. We would love to see you and chat over cookies and coffee.

Have a wonderful winter!

